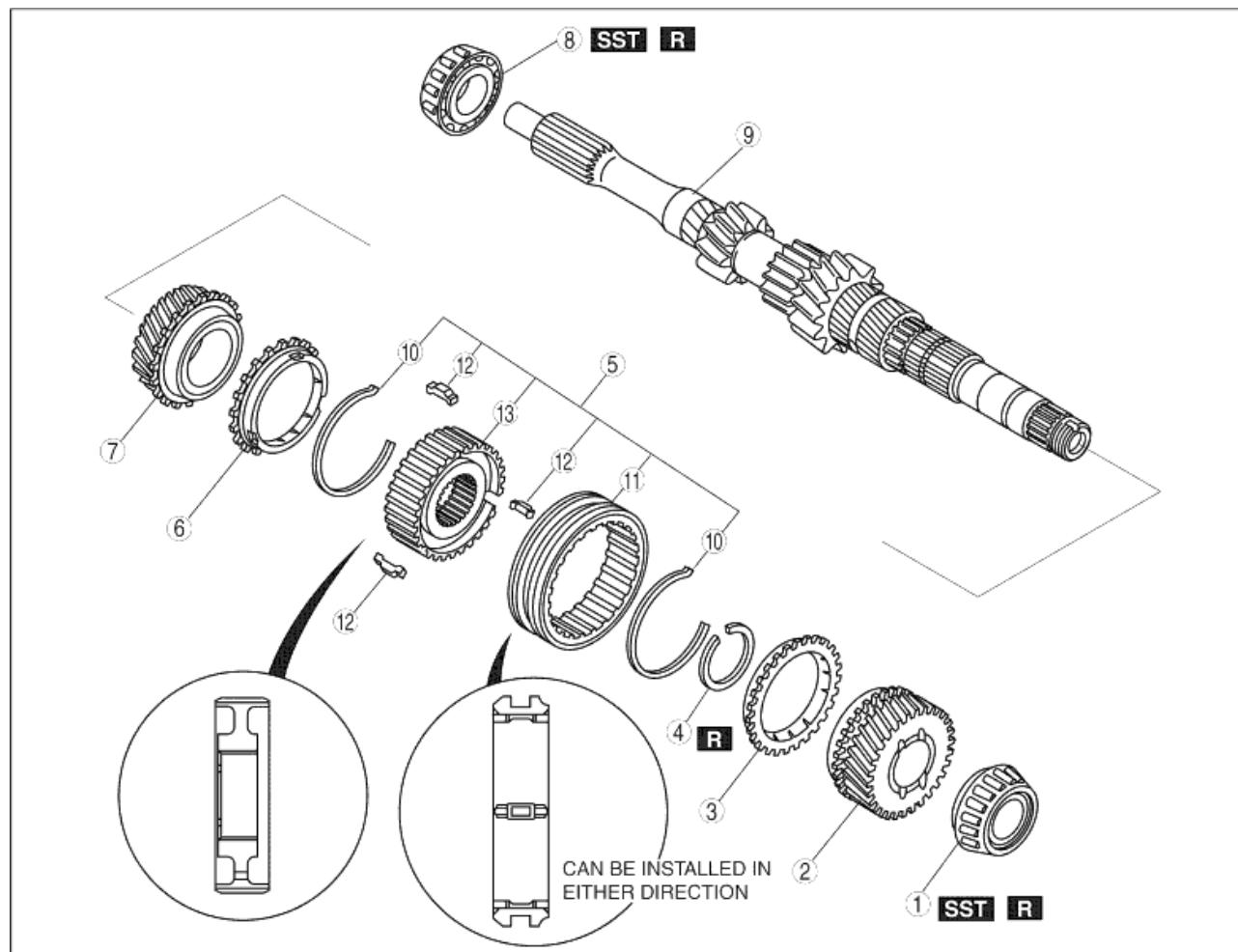


## PRIMARY SHAFT COMPONENTS DISASSEMBLY

A6E511217201M02

1. Disassemble in the order shown in the figure.



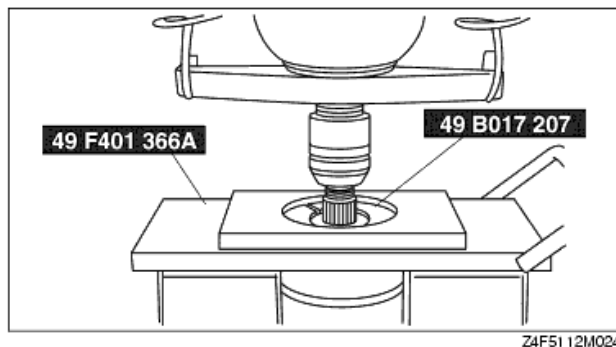
Z4F5112M023

1	Bearing (4th gear end) (See <a href="#">Bearing (4th Gear End) Disassembly Note</a> )
2	4th gear
3	4th synchronizer ring
4	Retaining ring
5	3rd/4th clutch hub component (See <a href="#">3rd/4th Clutch Hub Component, 3rd Synchronizer Ring and 3rd Gear Disassembly Note</a> )
6	3rd synchronizer ring (See <a href="#">3rd/4th Clutch Hub Component, 3rd Synchronizer Ring and 3rd Gear Disassembly Note</a> )
7	3rd gear (See <a href="#">3rd/4th Clutch Hub Component, 3rd Synchronizer Ring and 3rd Gear Disassembly Note</a> )
8	Bearing (primary shaft end) (See <a href="#">Bearing (Primary Shaft End) Disassembly Note</a> )
9	Primary shaft gear
10	Synchronizer key springs
11	3rd/4th clutch hub sleeve

12	Synchronizer keys
13	3rd/4th clutch hub

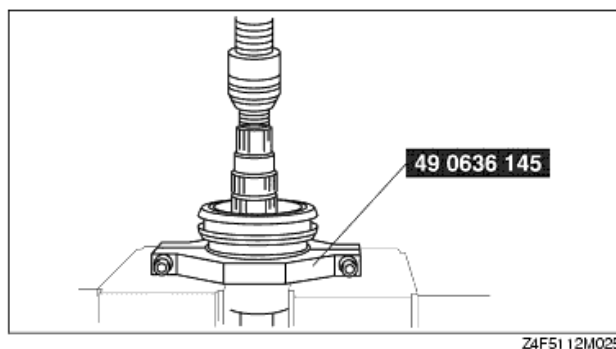
### Bearing (4th Gear End) Disassembly Note

1. Remove the bearing using the **SST**.



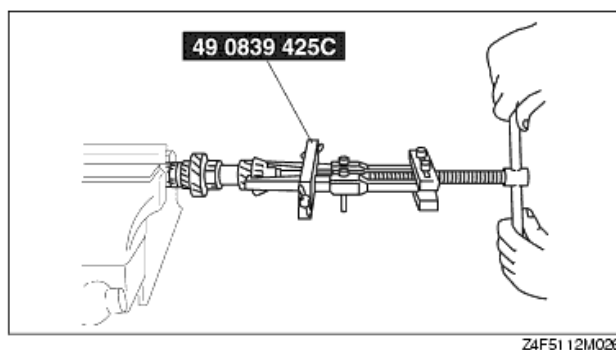
### 3rd/4th Clutch Hub Component, 3rd Synchronizer Ring and 3rd Gear Disassembly Note

1. Remove the retaining ring.
2. Remove the 3rd/4th clutch hub component, 3rd synchronizer ring, and 3rd gear using the **SST**.



### Bearing (Primary Shaft End) Disassembly Note

1. Remove the bearing using the **SST**.



### Caution

- Use protective plates in the vise to prevent damage to the primary shaft gear.